

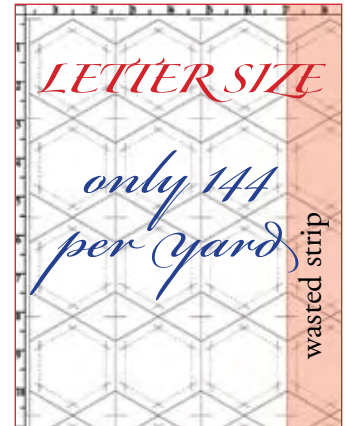
15 one-inch hexagons
8.5 x 12 Landscape



10 one-inch hexagons
6 x 12 Landscape



12 one-inch hexagons
8.5 x 11 Portrait



custom sizes

PRINTING YOUR FIRST CUSTOM SIZE

WHY?

Printing custom sizes makes better use of your fabric. Using custom sizes could make the difference between being able to use a favorite fabric and not having enough. In the example above, for one-inch hexagons

- Print 8.5 x 11 for about 144 hexagons/yard + partial hexagons and unusable scraps
- Print some 8.5 x 12 and some 6 x 12 for about 210 hexagons/yard + no waste

THAT'S ABOUT 66 EXTRA HEXAGONS PER YARD

All Inklingo template pages are 13 x 19 inches, which gives you the flexibility to print as many shapes as you need, without waste. It's an important feature.

Use the Suggested Cutting Layouts with each collection as a guide to help you choose the best custom size for each shape.

Sometimes we print Portrait and sometimes we print Landscape. The paper is always inserted into the printer in the usual way, but the software rotates the image to print exactly the part of the Inklingo page we need.

HOW?

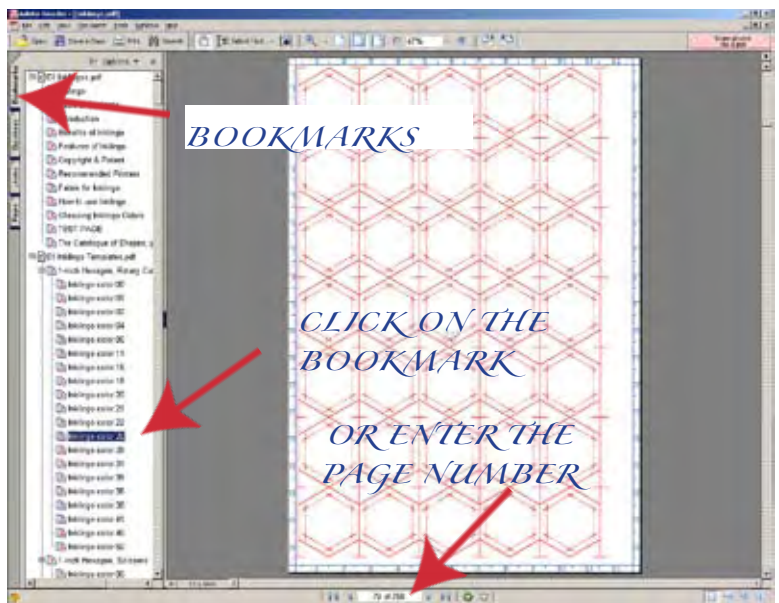
Any Inkjet printer allows us to set the size and to print Portrait or Landscape. The normal (default) print setting is 8.5 x 11 Portrait, which is fine for printing an e-mail.



It's not hard to change the settings. You could probably do it on your own, but it is so important that Monkey and I have described it step-by-step on the following pages.

*PRINT YOUR FIRST
CUSTOM SIZE*

YOU CAN DO IT



I always start with the page I want to print on the screen. I can print part of this page to get exactly the right number of perfect one-inch hexagons—and so can you.

Inklingo uses Reader software, which works with the software that comes with your Inkjet printer to give you great printing options, including custom page sizes.

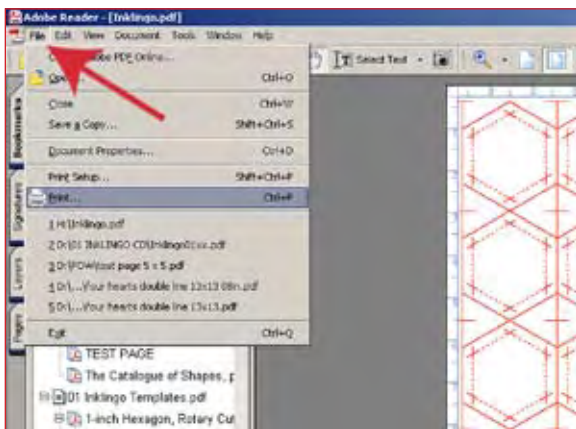
Before Inklingo, I had never printed anything that was not a standard size. I was surprised that any ordinary Inkjet printer can print custom sizes. Custom sizes allow us to print exactly the number of Inklingo shapes we want, without wasting fabric. That's perfect.

The suggested cutting layouts indicate the size that works for 4, 6, or more shapes. In this example, I will print 15 one-inch hexagons from Inklingo # 1, in color 26, on fabric 8.5 x 12 inches. The same method applies if you are printing other sizes, larger or smaller.

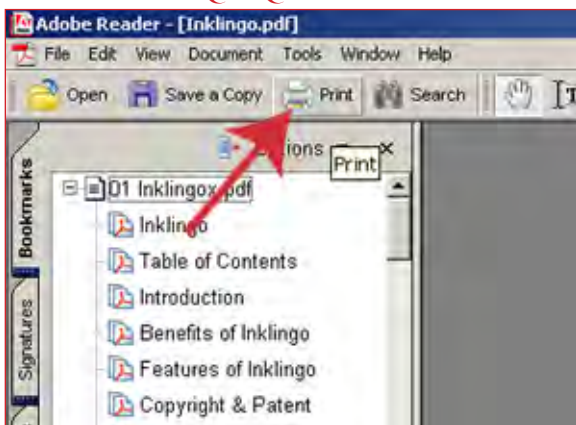
First, I go to the page of shapes I want to print, either by entering the page number or clicking on the description in the Bookmarks panel, as shown above. Using Bookmarks saves me the trouble of looking up the page number. If you want to follow along, go to any page of templates in any collection. (Page 79 of Inklingo # 1 is the example above.)

FILE > PRINT

Open the print dialog box either by clicking on FILE > PRINT, or by clicking on the PRINT icon, as shown in the two illustrations (left). There is often more than one way to perform a task on computers.



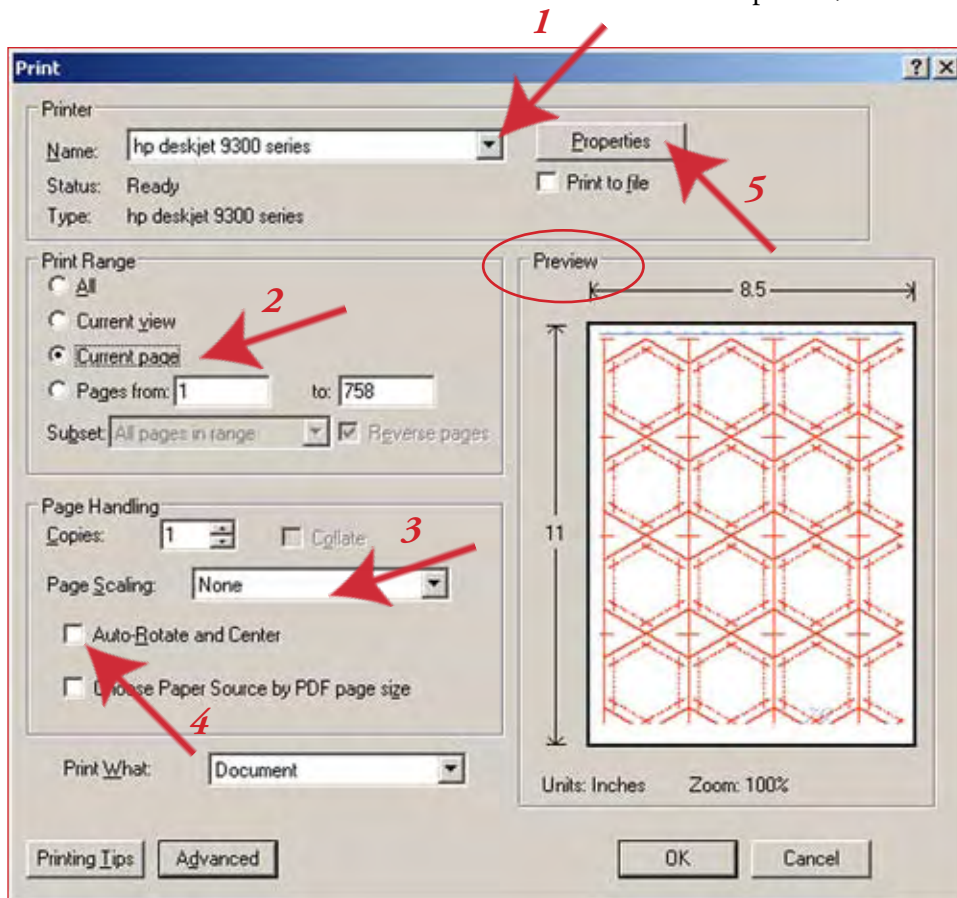
*FILE > PRINT
OR PRINT ICON*



ADOBE READER'S PRINT DIALOG BOX

1 Select the Printer.

I have more than one printer connected, so I click on the little down-pointing arrow to select the one I want to use for Inklingo. If you only have one printer, the name appears here.



2 Click to select “Current Page.”

Otherwise, you might end up printing *everything* starting at page one. The Preview shows the current page. We love Reader’s Preview feature!

3 Click to select “None” for Page Scaling.

The normal Reader default is “fit to printer margins.” If I select that, the shapes do not print the correct size. It shrinks everything (even the seam allowances) from 13 x 19 to fit whatever paper size.



TWO KINDS OF PRINT DIALOG BOX

Adobe Reader software has a print dialog box and your Inkjet printer has a print dialog box. They work together.

We need to use both, starting with the Adobe Reader box (this page), then the printer box, then back to the Adobe Reader dialog box again.

4 Un-check Auto-Rotate and Center, if it is checked.

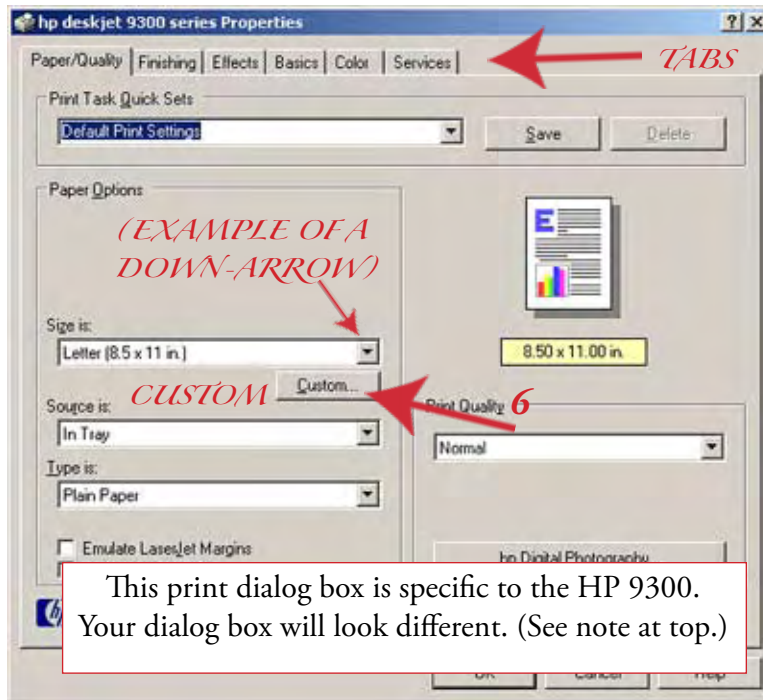
(If you want to see what this option does, click it on and off and watch what happens to the page of templates in the Preview.)

5 Click “Properties.”

This takes me to another print dialog box—the one for my Inkjet printer, where I can set the page size and other options, which is the next step.

YOUR PRINTER'S PRINT DIALOG BOX

IMPORTANT NOTE Your printer's print dialog box will look different from this one unless you are using an HP Deskjet 9300. Each printer model has its own appearance, so even another HP printer dialog box looks different. The box can also look very different depending on the brand. Canon, Epson, HP, Lexmark and others each have different labels and tabs, but they all give similar choices. Any brand is good for Inklingo.



For example, the HP 9300 tabs are named Paper/Quality, Finishing, Effects, Basics, Color, and Services, as shown here.

Lexmark tabs are Quality/Copies, Paper Setup, and Print Layout.

Whatever brand of Inkjet printer you are using, whether it is an all-in-one or just a printer, it will have tabs with similar choices. It doesn't matter what they are called, as long as you can find your way around.

To get to know your printer's dialog box and where the features are located, click on each tab and have a look. Notice where you can set page size, orientation (landscape or portrait), and print quality. Those are the options you will use most.



VARIATIONS Some printers do not have a custom button. The custom option is available but it is called something else. For example, it may be called "User Defined Paper Size" and it may be at the bottom of a drop-down list. (Access a drop-down list by clicking on the down-arrow.)

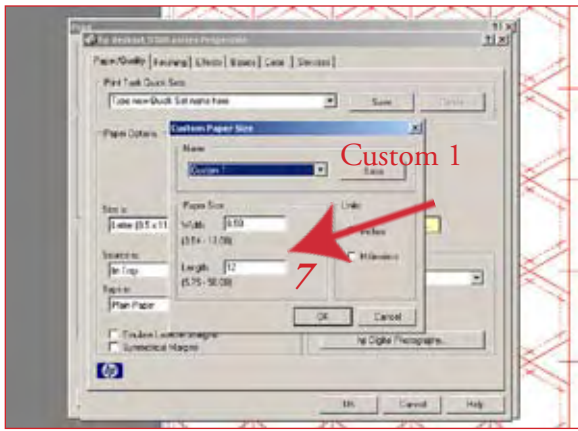
The Reader print dialog box is always the same but each printer's dialog box has a different look, so if these instructions don't seem to help, you may need to use the manual that came with your printer. The Inklingo Yahoo group is also a great place to get friendly advice.

For the HP 9300, the Size option is available when the Paper/Quality tab is chosen. So are the Quality (Normal, Best, etc) and the Paper Type (plain, photo, other).

The choice to print Portrait or Landscape is located with the Basics tab. (I'll need that later too.)

6 CUSTOM I click on Custom to set a custom size. You may not have a custom button, but you will have the option somewhere, as described to the left.

The following example shows the steps to set a custom size with the HP 9300 printer. The dialog boxes will be similar on your printer, but there will be differences too.

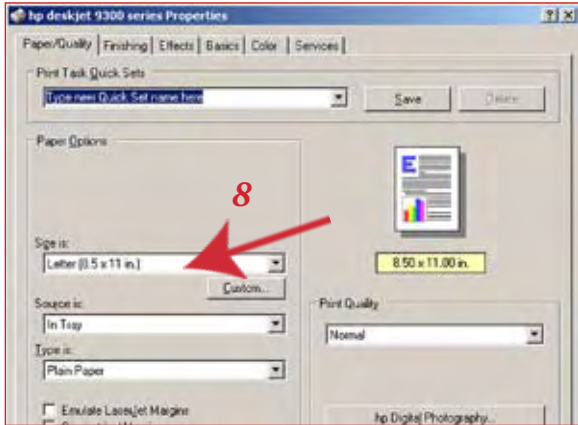


When I click Custom (previous page), a new, small dialog box appears on top (left).

7 I type 8.5 and 12 in the spaces and click OK to define “Custom 1.”

“Custom 1” will be 8.5 x 12 from now on, until I change it to something else.

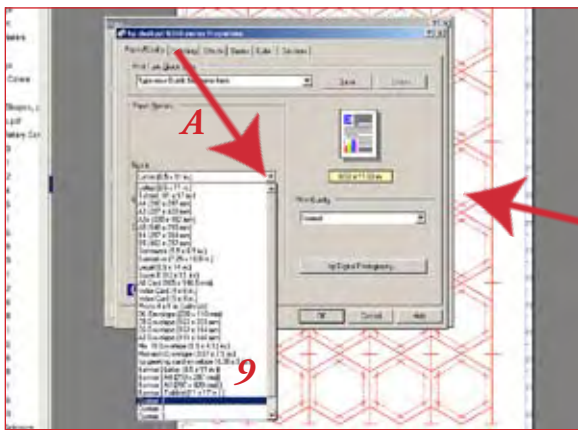
The HP 9300 printer has Custom 1, 2, and 3. Some printers let you set more than three and even let you name them, e.g. Inkingo 8.5 x 12 for Hex.



8 When I click OK, I am returned to the previous dialog box, but it still shows the Size as Letter (8.5 x 11 in). There is one more step on the HP 9300. I have to select “Custom 1.” (Not all printers are the same, see the note below.)

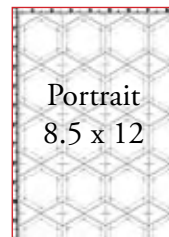
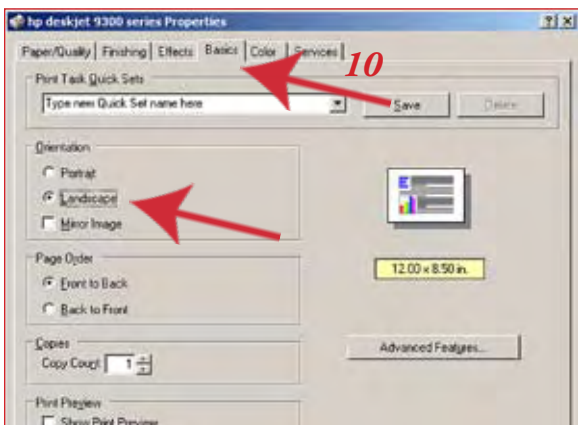


VARIATION Some printers *do* show your new size without the next step (9). If so, you can set Portrait or Landscape (10) —and then return to Reader’s print dialog box to finish, as on the next page.

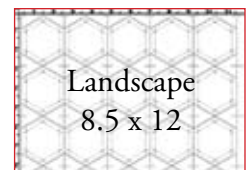


9 To choose “Custom 1,” I click on the down-pointing arrow (A) and select it from the long list that appears.

10 The small preview page will now show the new dimensions, but it is still in “portrait” mode (the default) and I need “landscape” this time. (The paper is always inserted in the printer as portrait, but in landscape mode, the software rotates the image to print the part of it I want.)



only 12 perfect hexagons

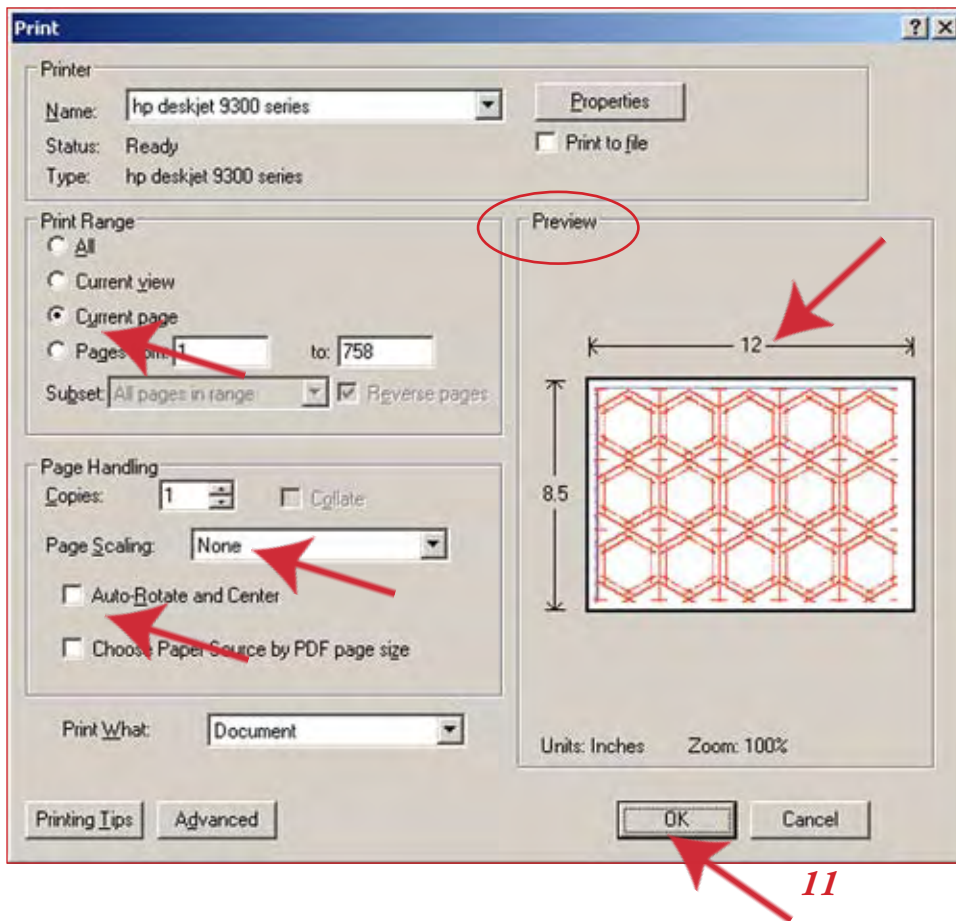


15 perfect hexagons

I click on the HP 9300 tab called Basics and select Landscape, as shown (left), and click OK.

Notice how the small preview page changes to show that it will print wider than it is high.

READER'S PRINT DIALOG BOX - AGAIN



Clicking OK in the previous screen returns me to the first dialog box—Reader's print dialog box.

Before I click OK again, a quick glance confirms my choices:

- Current Page
- None
- Auto-Rotate not checked
- Dimensions
- Preview looks good

11 Click OK to print.



MONKEY'S VERY BEST TIP
Pay attention to the Preview!

If you get in the habit of checking it before you click OK, you will avoid mistakes.

WRINKLE Some quilters report that when they return to the Adobe Reader print dialog box, the Preview does not update unless they click Print "All" and then click again on "Current Page."

It's a mystery.
(And it doesn't hurt to know about it.)

TIP If you are printing narrower than 8.5 inches, slide the guide bar across so it will feed straight.

Sometimes I print on scrap paper (cut to size) as a test, to confirm it really is the right size. In this case 8.5 x 12 inches, landscape, is great for 15 one-inch hexagons.

One thing follows logically after another, and you will get used to your printer's dialog boxes and tabs. Most printers will remember your settings, so you can print several pages without re-setting all the options every time.

By the way, it is also worthwhile to learn how to change the quality settings or "photo" settings on your Inkjet printer. I use "normal" most of the time with Inkingo.

One thing at a time. You can do it!